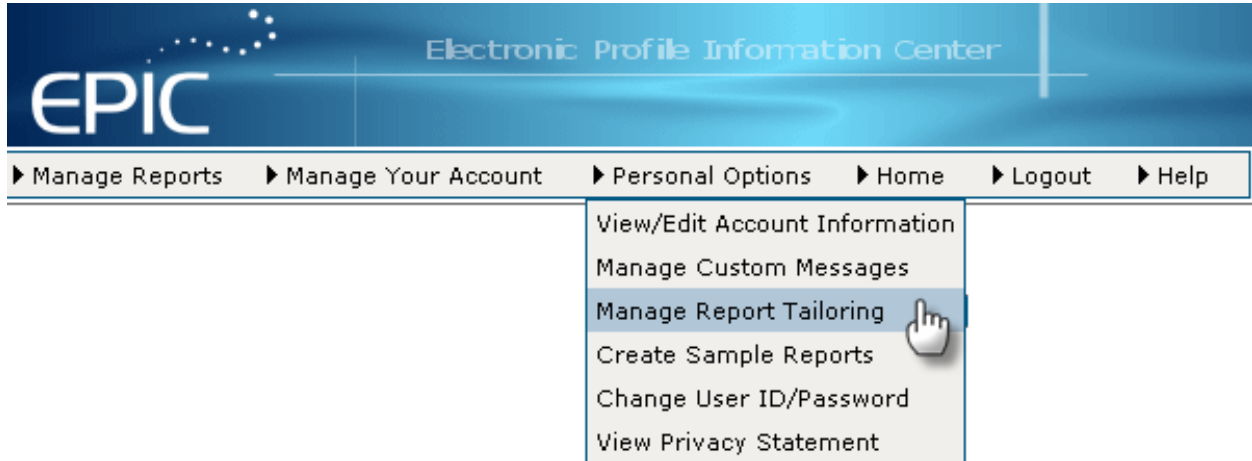


Manage Report Tailoring

Click on **Personal Options** in the EPIC navigation menu and select **Manage Report Tailoring** to view your tailored *Everything DiSC* reports or to begin the tailoring process.



If you do not have *Everything DiSC* reports loaded in your EPIC account, click on **Manage Your Account** in the EPIC navigation menu and select **Purchase Credit Online**.

To create a tailored report, click the **Create a New Tailored Report** button. See Report Tailoring - Getting Started for more information.

After you've created a tailored report, it can be edited or deleted using the appropriate link. The file name, program name, and tailored product name are shown in the **Tailored Product List** to help you identify your tailored reports.

Tailored Product List ?			
File Name	Program Name	Product	
ABC Training	Everything DiSC [®] 363 [™] for Leaders	Everything DiSC 363 for Leaders	Edit Delete
ABC Corp	Talent On Board	Everything DiSC Workplace Profile	Edit Delete
ABC Corporate	Managing Success	Everything DiSC Management Profile	Edit Delete

[Create a New Tailored Report](#)

If you delete a tailored report that has access codes assigned, a **warning message** will be displayed indicating that there are access codes associated with the report you are deleting. Deleting a tailored report that has access codes assigned will cause the access codes to revert to the original (default) page order of the report. See Report Tailoring - Getting Started for more information.

