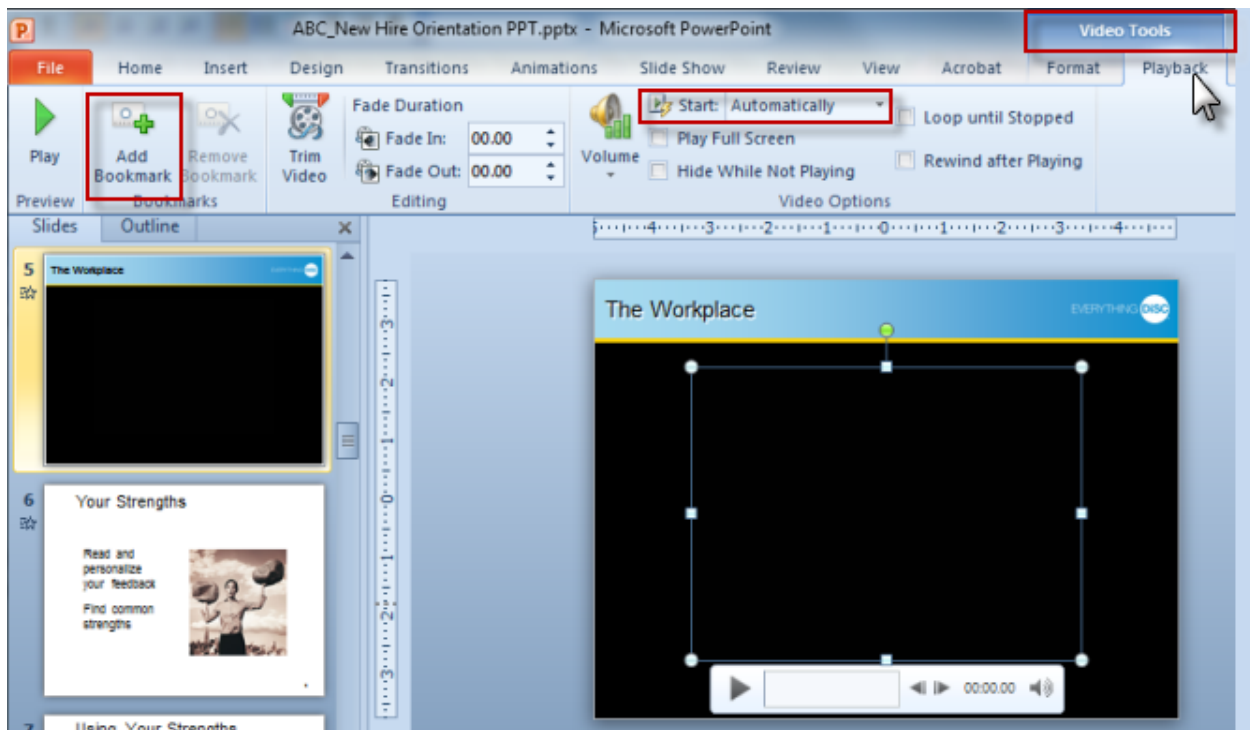


Edit Video Play Options

2010 or later versions of PowerPoint enable you to manage certain playback features of the video.

With a video slide selected in Normal view, click on the center of the slide to reveal the embedded video box on the slide and the **Video Tools** tab on the menu ribbon.



Using the **Video Tools > Playback** ribbon, you can customize how you show the video segment. Use the **Bookmark** feature to mark a different location in the video from which to begin playing. You can also change the **Start** setting from "automatic" to "on click" if you want to control when the video begins playing after advancing to the slide.